

# THE GEOSOURCE UPDATE

Geosynthetics | Erosion & Sediment Control | Stormwater Management | Hardscapes

## PROJECT HIGHLIGHT

### Muscle Wall Used on Streambank Repair Project Stream Diversion & Dewatering Solution Supplied by ASP Enterprises

**Problem:** Castle Contracting, the contractor on this job, is working on a streambank repair/ erosion control solution and needs to keep water away from the area while they complete the work.

**Solution:** The 4' Muscle Wall is being used here for stream diversion and dewatering. The Muscle Wall is a great solution for diverting the water because it is flexible and can be installed over the rocky creek bottom, and is adjustable to fit the terrain. Muscle Wall has a coupler-joint connection which allows each wall to securely connect with another. Once connected, the Muscle Wall is filled with water to secure it in place. After this, the Muscle Wall is covered in a 10ml liner to seal out water.

ASP's Technical Sales Representative, Adam Litteken, and Muscle Wall's Technical Sales Engineer, Tyler Searle, were also onsite during installation to provide support and assistance, ensuring the Muscle Wall was installed without a hitch.

**Results:** The contractor absolutely loved the solution! He said it is easy to work with and doing a great job of keeping the water out so they can get the dirt work and streambank installation completed. The contractor said there is very little water that needs to be pumped out, and the Muscle Wall tolerates the fluctuations of the creek's water levels very well. He also said they have plans to move the Muscle Wall downstream for two more sections of work.

Additionally, Muscle Wall is a great temporary solution that doesn't cause any damage to the creek or surrounding area when easily removed at the completion of the project.



*Muscle Wall is also an excellent solution for temporary flooding!*



# PRODUCT PROFILE

## Down and Dirty Ways to Get Off the Jobsite

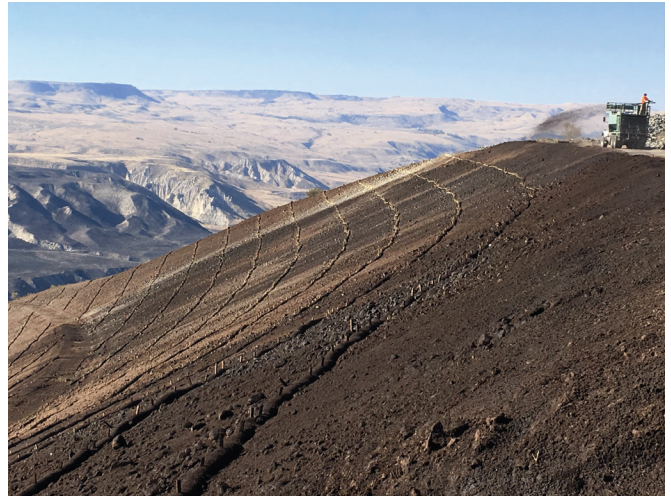
Who doesn't like an afternoon off and a little extra coin in their pocket?

Establishing sustainable vegetation and receiving the earliest possible Notice of Termination (NOT) are the goals for every erosion control contractor. The quickest path to vegetation and a NOT start with where your first steps falls on the path.

Did you look before taking that first step? Vegetation doesn't grow just anywhere a seed is laid. Seeds are sensitive to pH and other factors. Complete a soil test and make sure you know what you're getting into before you're in too deep.

Don't force it. The forces of nature are your friend. Whatever the soil test reveals, there is a solution. You can amend the soil or pick a seed that caters to the soil conditions. Once you identify the state of the soil health and the right seed for the site, the correct erosion control technologies ensure vegetation takes root in the most efficient way.

Hydraulically-applied erosion control products (HECP) allow you to directly apply soil amendments, seed and erosion control protection in a single application. The ability to improve soil health, distribute seed and provide protection with fewer man-hours provides you with a great advantage. Additionally, your ASP/Bowman/Quick/Cascade partner will be happy to talk with you about free soil testing, using HECPs to establish vegetation, and ways to get rebates when HECPs are used instead of less contractor-friendly erosion control technologies!



ProGanics Application



ProGanics Application



Flexterra + ProGanics Application



HydroStraw All In One Bonded Fiber Matrix (BFM)



# TECHNICAL TALKS WEBINAR SERIES

Join us for our monthly webinars as we answer questions, share technical information and collaborate on projects. Plus, attendees receive a PDH Certificate for attending. Our goal is to educate attendees on some of the site solutions we can provide.



## UPCOMING WEBINARS

### Profile Products Vegetation & Erosion Solutions Webinar

May 3rd, 2023 | 12:30pm-1:30pm CST

[REGISTER HERE](#)



Join Bill Murphy and Rachel Higgins to learn about Profile's vegetation and erosion control solutions, including Flexterra, ProGanics, JumpStart, etc., in this webinar. Profile Products is the world's largest manufacturer and supplier of hydraulically applied erosion control technologies, soil modifiers and more. Profile's products help prevent erosion and establish vegetation in virtually any arable environment around the globe. We'll also show some local ASP/Bowman/Quick/Cascade supplied projects that utilized some of Profile's solutions.

**This will be our last webinar before the summer break.** After this webinar, we will take a short break and resume webinars in September.

## EMPLOYEE SPOTLIGHT



### Tony Kent, CPESC

*Technical Sales Representative at Cascade - Salt Lake City, UT*

22+ year industry veteran, Tony started as the lowest of fabric monkeys, where he truly enjoyed climbing into trucks and delivering products all over the Rocky Mountain West. Before joining Cascade Geosynthetics, Tony gained industry experience with many companies like Geodynamics, Nilex, and Huesker USA. Tony joins Cascade's Salt Lake City office as our Technical Sales Representative, managing business development and sales. He received a BS in Business from Weber St. University and shortly after received his CPESC certification. Tony has spent many years developing his knowledge and understanding of geosynthetics. He knows how geosynthetics can affect a project's outcome and is eager to offer assistance and take on any project. In his free time, Tony enjoys spending time with his wife and 3 kids, training his German Wirehair pointers, and being in the outdoors hunting and fishing.

tony.kent@cascadageos.com | cell: 385.502.1184

## ENGINEER'S NOTE



**Bill Murphy, P.E.**  
bmurphy@aspent.com

*From the Desk of Bill Murphy, P.E.*

### Not All Soil Tests Are Created Equal

Happy Spring! Now that spring has sprung, the trees are budding, soil temps are rising, farmers are in the fields and construction activity is bustling. During a recent conference, I heard experts teaching about soil tests, but they were not speaking the same language. The first was a geotechnical presentation about the importance of testing soils for bearing capacity as foundations for roads, bridges and buildings. The second was teaching about soil health for vegetation growth in sustainable solutions. As a civil engineer, I learned about the former in college and have seen many geotech soil reports, but I have room for improvement on the latter. Profile Products makes it easy with their Profile Soil Solutions Software (PS3). Today I am creating a project profile and initiating the free soil test process. Stay tuned next month for an update. Also, join us Wednesday, May 3, as Profile's Rachel Higgins joins me as our guest on our monthly Technical Talks webinar.



## CELEBRATING EARTH DAY!

At ASP, Bowman, Cascade and Quick Supply, we're passionate about protecting our Earth! We love getting to recommend green solutions and providing solutions that protect our soil and water, two of our most valuable natural resources. We work on a wide variety of projects, including green infrastructure, vegetation management, erosion control, stormwater management and more. These solutions keep soil in place, promote healthy vegetation (which provides cleaner air), provide water filtration and improve water quality, reduce flooding, optimize the sustainable design of our nation's critical infrastructure, etc.

Let us help you find environmentally friendly solutions! Together we can work to mitigate environmental disturbances during construction and ensure your projects have a positive impact on the Earth!



***Click to learn more about our GREEN solutions!***

## CONTACT US

### ASP Enterprises

[aspent.com](http://aspent.com)  
salesasp@aspent.com

### Quick Supply Co.

[quicksupplyco.com](http://quicksupplyco.com)  
salesquick@quicksupplyco.com

### Bowman Construction Supply

[bowmanconstructionsupply.com](http://bowmanconstructionsupply.com)  
salesbcs@bowmanconstructionsupply.com

### Cascade Geosynthetics

[cascadageos.com](http://cascadageos.com)  
salescascade@cascadageos.com

#### St. Louis, MO

636.343.4357

#### Kansas City, MO

816.554.1191

#### Omaha, NE

402.861.8579

#### Wichita, KS

316.393.1554

#### Des Moines, IA

515.289.1271

#### Denver, CO

303.696.8960

#### Loveland, CO

970.535.0863

#### Colorado Springs, CO

719.257.7840

#### Portland, OR

971.339.1020

#### Salt Lake City, UT

435.276.0817