

THE GEOSOURCE UPDATE

Geosynthetics | Erosion & Sediment Control | Stormwater Management | Hardscapes

PROJECT HIGHLIGHT

Rain Guardian & FocalPoint Paired for Stormwater Management Quick Supply Co. Supplies Solution for Rutland Avenue in Des Moines, IA

Rutland Avenue in Des Moines, IA struggled with flooding and managing stormwater because of a lack of stormwater infrastructure and a high degree of impervious surface. Quick Supply Co. worked with Snyder & Associates to design a stormwater management treatment train to work with the existing conditions and resolve these issues. Rain Guardian Turrets and FocalPoint Biofiltration Systems were selected as the solution for this project. These products can be used individually and have great success, or they can be paired together for an even better stormwater management solution.

Along Rutland Avenue, there is a series of six bioretention cells installed. These bioretention cells help capture stormwater, treat stormwater for sediment and pollutants, and slowly release it into the existing stormwater system. Each "cell" is a combination of a Rain Guardian Turret (pre-treatment), a FocalPoint biofiltration system (stormwater capture and treatment) with an apron of Flexamat. The stormwater is first captured by the Rain Guardian Turrets which filter out debris and trash and pass the water along over the Flexamat to the FocalPoint system. The Flexamat prevents erosion when the water flows from the turret to the FocalPoint. Once water makes its way to the FocalPoint, it is filtered through the high-flow bioretention media and into an underground high-flow detention system, in this case R-Tanks, and is released at a controlled rate.

This green infrastructure solution manages water quality and quantity. With quick, routine maintenance to clean out leaves and silt, this long-term solution will keep runoff and stormwater off of the surrounding streets while improving water quality downstream.



Metropolitan St. Louis Sewer District has recently approved both Rain Guardian and FocalPoint! These solutions are each MSD-approved filtration systems approved as stand-alone water quality BMPs.

PRODUCT PROFILE



Muscle Wall for Containment

Muscle Wall can be used in various containment applications including both primary and secondary scenarios. It is also reusable, making Muscle Wall the superior and sustainable containment solution.

For years, the method of choice for containment has been earthen solutions. These solutions are expensive, require the use of heavy equipment, and present significant environmental concerns. Muscle Wall is engineered and designed to provide superior containment without presenting the common and dangerous issues that are prevalent with earthen solutions.

The beauty of Muscle Wall lies within its sections. With a modular design, it can be configured and customized completely to meet the needs of any user. The corner units allow for a 90 degree turn and the ability for square containments. The 22 degree range of motion at the joints allow for circular or curved containments as well as the ability to bend or curve around terrain or equipment.

The modular design of Muscle Wall enables the entire system to be installed based around the individual needs of the customer and the deployment site. The ability to have squared primary and secondary containments helps maximize the utilized space on the pad, as well as fit around other equipment that may be present on site.

2022 IECA GREAT CONNECTIONS CONFERENCE

July 26-28, 2022 | St. Louis, MO

Join ASP Enterprises and Quick Supply Co. at the 2022 IECA Great Connections Conference July 26-28 in St. Louis, Missouri! We will have a booth at the conference and look forward to seeing everyone there. **Attendees are eligible to receive 10.5 Professional Development Hours for attending the conference.**

[Learn more and register here.](#)

Our civil engineer, Bill Murphy, is giving a **Permeable Pavements & Pretreatment presentation on July 27th from 9:40am-10:25am at this event.** Our first line of defense against stormwater pollution is the site of first impact: streets and parking lots. Permeable paving systems provide immediate impact by intercepting rainfall as soon as it hits the pavement. Runoff reduction, cooling and cleaning are all benefits of permeable paving, as long as the system is properly designed, properly installed and properly maintained. We will share tips on all three of those aspects. If permeable paving is not used then...attend Bill's presentation to learn more!



TECHNICAL TALKS WEBINAR SERIES

Our monthly webinars will resume in September! Until then, all of our past webinars are available to watch on our [YouTube Channel](#).

We also encourage you to schedule a presentation with us! We're happy to present on any topic of your choice, either in person or virtually. This presentation can be focused on a specific project or solution or cover a broad range of solutions and applications. Plus we'll get you lunch, and all attendees will receive a PDH certificate.



CLICK TO SCHEDULE

Please reach out if you need help with a project or would like to learn more about any of our products and solutions. Bill Murphy or one of our Technical Sales Representatives would be happy to share their expertise with you! Our goal is to ensure the best materials are selected and that every project is successful.

ISTORM CONFERENCE

September 15-16, 2022 | Ankeny, IA



Join Quick Supply Co. at Iowa's Premiere Stormwater Conference and Exhibition. IStorm 2022 will provide an unparalleled opportunity to network with stormwater professionals from cities, counties, consultants, as well as other design professionals and government agencies. Conference tracks include MS4 Implementation, Green Infrastructure, Erosion and Sediment Control, Floodplain and Watershed Management, Research, and Community Outreach. The conference will include technical presentations, case studies, panel discussions, and field trips.

Our Civil Engineer, Bill Murphy, will present on 'Permeable Pavements & Curbside Pretreatments' at IStorm. Bill is also leading a 'Permeable Paver Maintenance Demo'. We hope to see you there! [Learn more and register here](#).

EMPLOYEE SPOTLIGHT



Naomi Morgan

Technical Sales Representative at Cascade Geosynthetics

Naomi joined Cascade's team about two months ago as a Technical Sales Representative! She grew up in Austin, Texas, and has lived in Portland for the last 14 years. Naomi's background is in Vegetated Roofing, and she appreciates well-designed spaces. Naomi is driven to make our built environment more beautiful by promoting diverse, healthy vegetation and soils. She adores her coworkers and jives well with Cascade Geo's enormous selection of geosynthetic solutions. She values freedom, family, learning, mountains and clean water and is the perfect addition to our team.

naomi.morgan@cascadegeos.com | 512-799-4843

ENGINEER'S NOTE



Bill Murphy, P.E.
bmurphy@aspent.com

Remember: please attend my upcoming presentations at IECA Great Connections (St. Louis; July 26-28), IStorm (Ankeny; Sept. 15), and IECA Annual Conference (KC; Feb. 5-8, 2023).

From the Desk of Bill Murphy, P.E.

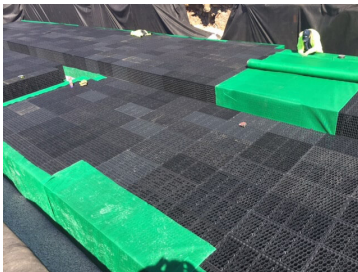
Airports & SWPPPs

On May 3, I attended a virtual training session hosted by the Iowa Storm Water Education Partnership (ISWEP) titled “Advanced Topics in Industrial Stormwater Management: Stormwater Pollution Prevention Training for Airport Staff”. Not only was it the longest-titled continuing education course I ever attended, but it was also interesting and informative.

Some of the takeaways that I captured in my written notes were:

- No wet ponds: concerns about geese vs. aircraft. We have underground stormwater detention systems like **R-Tanks** and chambers that can alleviate that concern.
- Fuel spill and other hazardous materials containment: **Muscle Wall** is actively working to solve this challenge across the US. We distribute liners as well.
- Erosion control: rock rip rap gathers weeds and debris that can become airborne, as well as concerns with small rocks being dislodged. **Flexamat** can be secured over a turf reinforcement mat to safely protect vegetation and is easily maintained with mowers.
- Mud tracking: tarmacs and runways must be kept clear of mud and debris. This is exactly why **FODS** was developed as a better option in lieu of rock entrances at construction sites.
- Runoff water quality: there are many activities at airports that are potential pollution sources if not properly managed on-site. Structural best management practices (BMPs) like **Nutrient Separating Baffle Boxes** (NSBBs) and **Fabco** inlet filters are designed to remove pollutants from stormwater runoff.

Site assessments and a good Stormwater Pollution Prevention Plan (SWPPP) are required by all airports and monitored by the Department of Natural Resources (DNR) in most states. Contact us to learn about these proven solutions and more.



R-Tanks



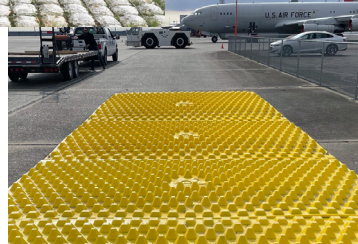
Flexamat



NSBBs



Muscle Wall



FODS



Fabco

CONTACT US

ASP Enterprises

aspent.com
salesasp@aspent.com

Quick Supply Co.

quicksupplyco.com
salesquick@quicksupplyco.com

Bowman Construction Supply

bowmanconstructionsupply.com
salesbcs@bowmanconstructionsupply.com

Cascade Geosynthetics

cascadegeos.com
salescascade@cascadegeos.com

St. Louis, MO
636.343.4357
Kansas City, MO
816.554.1191

Omaha, NE
402.861.8579
Wichita, KS
316.393.1554

Des Moines, IA
515.289.1271

Denver, CO
303.696.8960
Colorado Springs, CO
719.257.7840
Loveland, CO
970.535.0863

Portland, OR
971.339.1020