

# The GEOSOURCE UPDATE

*from Your Trusted Site Solution Specialists*

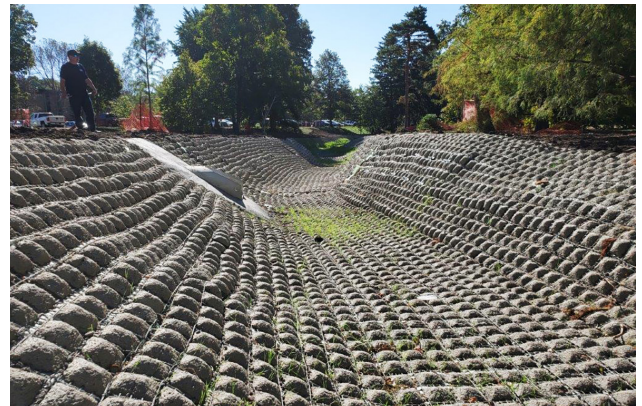
Geosynthetics | Erosion & Sediment Control | Stormwater Management | Hardscapes

## PROJECT HIGHLIGHT

### Flexamat Provides Erosion Control Solution on Project Sites

*ASP Enterprises Supplies Flexamat as Project Solutions for Scour Prevention & Slope Stability*

At the Maxwell Arboretum Project in Lincoln, Nebraska, the project manager was tasked with drainage channel improvements. The goal of this storm drainage project was to remove and dispose of the concrete bumpers and railroad ties that were previously installed and reconfigure the channel to manage water flow during rain events. The Flexamat provides long-term erosion control and prevents scouring, so the channel will not fail over time. In addition to handling high flow water runoff, Flexamat also allows vegetation growth. Vegetation will grow to cover the Flexamat, creating a natural aesthetic and allowing landscapers to mow right over it.



At the Lincoln South Beltway project, the contractor built a skewed bridge on top of an MSE wall. The slope was too steep to pour slope protection, and a block wall was too heavy to build on top of the MSE wall. They opted to grade the slope at the lowest percent possible and use Flexamat to stabilize the slope. It was a cost-saving and effective alternative to traditional methods that will provide long-term slope protection.





# PRODUCT PROFILE

## WattleFence by Western Green

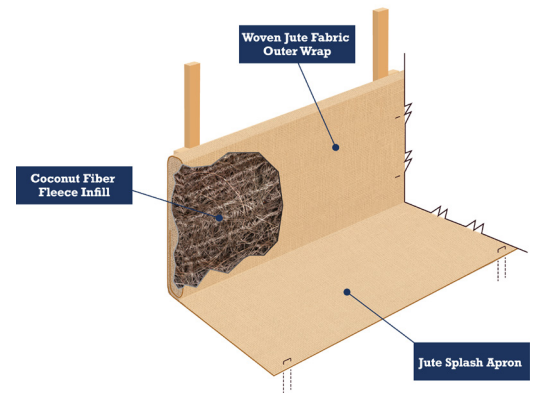
New Product Alert – we are now distributors of WattleFence! WattleFence, created by Western Green, is the newest innovation in sediment control. It combines the best features of wattles and silt fence and is completely biodegradable. This unique solution was designed to improve the treatment of sediment-laden stormwater flows by quickly and cost-effectively replacing more traditional technologies for perimeter control, slope interruption, ditch checks, and more.

WattleFence, made in the USA, is constructed using a fleece of coconut fiber wrapped in biodegradable jute woven fabric. The WattleFence uses wood slats and staking to create a 9" high fence unit with a 6" splash apron to further secure the product and prevent scouring.

The overall efficiency and performance of WattleFence provide a tool to simplify the process of sediment control.

- Unique value in shipping and storage – add a few thousand feet to a near-full truckload of blankets. Keep miles of product in the same space 500 feet worth of wattles requires.
- Unique value in installation – no trenching, leave-behind biodegradability, and flexible installation arrangements
- Two-stage filtration, performance at first flush and high flow

To learn more about this product, view spec sheets, and read about the product testing results, [visit our website](#).



## FREE PDH CERTIFICATES FOR PROFESSIONAL LICENSING RENEWALS

Now through the end of the year, we are offering free PDH certificates for Professional Licensing renewal requirements! The end of the year will be here before you know it, and we want to help you have all the PDH certs you need to successfully renew your professional licensing.

Schedule a virtual presentation with our civil engineer, Bill Murphy, P.E., to earn a PDH certificate. Bill can give a presentation on your topic of choice, including the following and more.

- Low Impact Development
- Stormwater Management
- Green Infrastructure
- Erosion Control Solutions

Reach out to Bill directly at [bmurphy@aspent.com](mailto:bmurphy@aspent.com) or schedule a presentation through the link below. Bill is excited to share his knowledge on some innovative products and important solutions for his fellow engineers!

[CLICK TO SCHEDULE](#)

## TECHNICAL TALKS WEBINAR SERIES

Our webinars are back! Our webinars are for answering questions, sharing technical information and collaborating on projects, plus attendees receive a PDH Certificate for attending. Our goal is to educate attendees on some of the site solutions ASP, Quick, Bowman and Cascade can provide.



### Upcoming Webinars

#### Propex Webinar

December 8th, 2021 | 12:30pm-1:30pm CST

**REGISTER HERE**



Propex is a global leader in developing and manufacturing innovative geosynthetic and erosion control products and systems. From levee repair after a “bomb cyclone” to high altitude mountain road protection to shoreline stability, Propex Geosolutions has “Engineered Earth Armoring Solutions” to face your toughest challenges. Ben Campbell will join our host Bill Murphy as we resume our “Technical Talks” webinar series. Join us to learn about Propex’s innovative solutions!

#### Flexamat Webinar

January 5th, 2022 | 12:30pm-1:30pm CST

**REGISTER HERE**



Let the good times roll! Join our host Bill Murphy as he welcomes our friend Ron Geater to ring in the new year. This webinar will provide an update on Flexamat as it continues rolling across the country. A common theme across all of our markets is the nonstop demand for better erosion protection in place of rock rip rap. Flexamat is a vegetated concrete block mat utilized for stabilizing slopes, channels, low water crossings, inlet/outlet protection, shorelines, etc. and continues to be a top choice for engineers and contractors.

## 2022 IECA ANNUAL CONFERENCE

Join us at IECA’s Annual Conference & Expo February 15-18 in Minneapolis, Minnesota! We look forward to seeing everyone there. **Register at [ieca.org/annual22](https://www.ieca.org/annual22) by December 6th to receive a free pair of tech gloves!** Why should you attend? Reserve your spot to re-unite to in-person learning, re-connect with peers and re-invest in industry solutions. Expand your knowledge, connections and expertise at this industry event!



***I’m Attending! Join Me!***  
**February 15-18, 2022 | Minneapolis, MN**  
**Register Now: [www.ieca.org/annual22](https://www.ieca.org/annual22)**





# ENGINEER'S NOTE

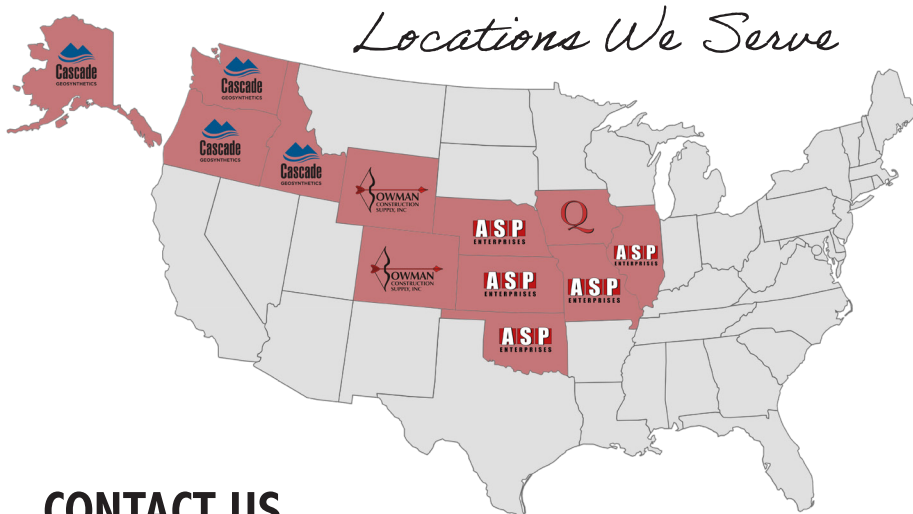
*From the Desk of Bill Murphy, P.E.*



Bill Murphy, P.E.  
bmurphy@aspent.com

Greetings friends. This month's Engineer's Note comes at the perfect time: Thanksgiving. As I write this note I am reflecting on last week's IECA Mountain States Chapter conference in Denver. It was my first time flying since Feb 2020, so I was anxious about being around so many people and traveling through airports. It was also my first time speaking in front of a live audience since March 2020, the beginning of the COVID pandemic. My nerves were a wreck for weeks before the trip. Apparently over the past couple of years my confidence faded and I developed social anxiety. My wife and kids encouraged me and tried to calm me down before I left home. The night before my presentation I did not sleep. Not a wink. But my coworkers and work friends encouraged me at the conference and attended my presentation with smiles and helped me feel comfortable. Looking back, all of my fears were imagined and none of them came true. Thankfully my family and friends got me through it (along with some answered prayers). That single experience made me think about how blessed we are to have friends like you supporting and encouraging us at our companies. Many of you have had similar struggles the past couple of years. Hopefully you have people in your circle that support and encourage you, too. While we are looking for people to help lift us up, let us look even more for opportunities to be those helpful people for others. The best way we can overcome our challenges is to reach out and lend a helping hand to someone who has it even rougher than we do. It's all about perspective. At the Hale Family of Companies, our perspective is one of gratitude. We are thankful for all of you who trust us to help you as you seek to help others. Blessed to be a blessing. Happy Thanksgiving!

## YOUR TRUSTED SITE SOLUTION SPECIALISTS



For more than 45 years ASP Enterprises, Quick Supply Co., Bowman Construction Supply and Cascade Geosynthetics have provided geosynthetic, erosion control, sediment control and stormwater management solutions with integrity and expertise. Our mission is to be your local expert on solutions that improve our communities while providing the highest level of customer service. We are proud to represent numerous manufacturers and will be present from design specification and development to installation to ensure your project's success.

## CONTACT US

**ASP Enterprises**  
aspent.com  
salesasp@aspent.com

**Quick Supply Co.**  
quicksupplydm.com  
salesquick@quicksupplydm.com

**Bowman Construction Supply**  
bowmanconstructionsupply.com  
salesbcs@bowmanconstructionsupply.com

**Cascade Geosynthetics**  
cascadegEOS.com  
salescascade@cascadegEOS.com

St. Louis, MO  
636.343.4357  
Kansas City, MO  
816.554.1191

Omaha, NE  
402.861.8579  
Wichita, KS  
316.393.1554

Des Moines, IA  
515.289.1271

Denver, CO  
303.696.8960  
Loveland, CO  
970.535.0863

Colorado Springs, CO  
719.257.7840

Portland, OR  
971.339.1020