

# THE GEOSOURCE UPDATE

Geosynthetics | Erosion & Sediment Control | Stormwater Management | Hardscapes

## PROJECT HIGHLIGHT

### **GEOWEB® Retaining Wall** Erosion Control & Slope Stabilization Solution Supplied by Cascade Geos

Travis Riehl assisted on this unique residential GEOWEB Retaining Wall project in Kalama, WA. The benefit and reason for installing the GEOWEB Retaining Wall was that it allowed the homeowner to build up the slope, making the land more usable. With this project, the homeowner was able to convert a previously unusable slope into a now usable area that can support a driveway and eliminate the possibility of erosion.

With limited site access and space, the GEOWEB was a great option for the retaining wall material. It was easily brought onto the site and installed. Stretcher boards and frames were used to keep the geocell panels open during installation, making it easy to fill them with aggregate. Because of the site access constraints, a unique solution of a crane and rock shoot was used to fill the geocells during installation.

Another reason for selecting the GEOWEB Retaining Wall system for this project is because it's a green system that is aesthetically pleasing and will blend into the surrounding nature. While the wall has not yet been seeded (pictures show natural vegetation growth that occurred), there are plans to go back and plug plants in the face of the cells. The 1" offset of each panel allows the wall to be vegetated with any choice of landscaping.



# PRODUCT PROFILE



## Concrete Canvas

Concrete Canvas (CC) is a unique solution for erosion control and containment. It is part of a revolutionary class of construction materials called Geosynthetic Cementitious Composite Mats and Barriers (GCCM/Bs).

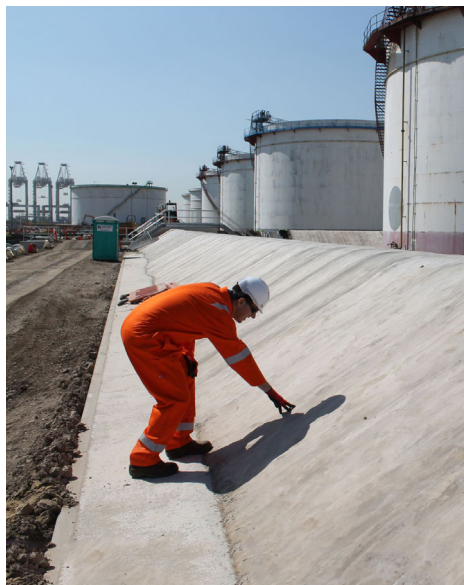
CC is a flexible, concrete filled geosynthetic, that hardens on hydration to form a thin, durable, water proof concrete layer. Essentially, it's concrete on a roll that can be installed 10-times faster than conventional concrete solutions. Concrete Canvas allows concrete installation without the need for plant or mixing equipment while also reducing vehicle movements and contractor burden. Simply unroll and add water.

Concrete Canvas consists of two interconnected layers of geotextile that encapsulate a specially formulated dry concrete mix. An LLDPE geomembrane backing ensures the material has very high impermeability. CC can be hydrated either by spraying or by being fully immersed in water.

Concrete Canvas combines the impermeability of a geomembrane with the protection and durability of concrete. CC can be installed as rapidly as conventional geosynthetics and 24 hours from hydration will cure to create a hard-wearing concrete canal lining which is ready to use.

Concrete Canvas is used in a wide range of erosion control applications, including:

- Cable Barrier/Guard Rail Weed Suppression
- Ditch Lining
- Slope Protection
- Berm Lining
- Remediation
- Weed Suppression



## EMPLOYEE SPOTLIGHT



### **Buddy Strauser**

*Technical Sales Representative at ASP Enterprises - St. Louis*

In February 2023, Buddy Strauser joined ASP Enterprises as a Technical Sales Representative. As a hardscape industry veteran, Buddy spent the last decade at Kirkwood Material Supply, where he established long-term relationships throughout the St. Louis area with his customers and vendors. He blends his in-depth product knowledge with personal customer relationships to provide exceptional service that his customers can depend on.

Growing up in the St. Louis area, Buddy enjoyed baseball. More recently, he enjoys spending time with his family, traveling, and golfing when he can. Buddy has been married to his wife, Shannon, for sixteen years, and they have three children together, Elizabeth, Brody, and Brooke.

Buddy is excited to be a part of the team at ASP Enterprises, Bowman Construction Supply, Quick Supply Co. and Cascade Geosynthetics. He looks forward to continued success serving his customers at ASP Enterprises.

bstrauser@aspent.com | cell: 314-698-3453

## TECHNICAL TALKS WEBINAR SERIES

Thank you to all who attend our monthly webinars! We enjoy hosting these webinars and sharing technical information on the innovative solutions we supply.

We are taking a short break from our monthly webinars this summer. Don't worry, we will resume them in September! Bill Murphy will be back, joined by guests to educate attendees on the various products and unique solutions we offer.

Until then, all of our previous webinars can be watched on our YouTube channel. Video topics include the following and much more!



- MSE Walls
- Streambank Stabilization
- Stratavault Soil Cell Systems
- Geosynthetics & Geogrids
- Engineered Earth Armoring Solutions
- Muscle Wall
- Hydraulically Applied Erosion Control
- Vegetation Management & Revegetation
- Erosion Control & Sediment Control

**VISIT YOUTUBE CHANNEL**

# ENGINEER'S NOTE



**Bill Murphy, P.E.**  
bmurphy@aspent.com

*From the Desk of Bill Murphy, P.E.*

## If You Know, You Know --- Pre-Bid Meetings?

“If You Know, You Know” (IYKYK) has become a ridiculously popular and annoying phrase, but it sure gets your attention. Our company proudly touts ourselves as being much more than a products distributor. We add value and become trusted advisors. This starts with education. We share knowledge of innovative solutions that have proven successful. That happens at conferences, seminars, and lunch-and-learns and continues with pre-bid and pre-construction meetings.

Wait. Did I say “pre-bid”? Yes. In addition to the well-known pre-construction meetings that should happen on all projects, we offer pre-bid meetings with contractors to inform them of new-to-them innovative solutions. Being good stewards of your resources is something we take seriously. Contractors who see something new in a set of plans must be careful how they bid on those projects. If we can visit them to give a presentation and let them put their hands on new products, they can better estimate the amount of time and effort it will take for proper installation. That often results in more accurate bids and can encourage more contractors to submit bids on your innovative project. Please let us help you early and often. Call us today.

# YOUR TRUSTED SITE SOLUTION SPECIALISTS



## Locations We Serve

Our mission is to provide quality solutions to the construction industry with exemplary customer service and support. By continually learning about our customer needs, expanding our technical knowledge and diversifying our product mix, our technically skilled teams aim to be your local source for the very best site development solutions.

## CONTACT US

### ASP Enterprises

[aspent.com](http://aspent.com)  
salesasp@aspent.com

### Quick Supply Co.

[quicksupplyco.com](http://quicksupplyco.com)  
salesquick@quicksupplyco.com

### Bowman Construction Supply

[bowmanconstructionsupply.com](http://bowmanconstructionsupply.com)  
salesbcs@bowmanconstructionsupply.com

### Cascade Geosynthetics

[cascadegeos.com](http://cascadegeos.com)  
salescascade@cascadegeos.com

#### St. Louis, MO

636.343.4357

#### Kansas City, MO

816.554.1191

#### Omaha, NE

402.861.8579

#### Wichita, KS

316.393.1554

#### Des Moines, IA

515.289.1271

#### Denver, CO

303.696.8960

#### Loveland, CO

970.535.0863

#### Colorado Springs, CO

719.257.7840

#### Portland, OR

971.339.1020

#### Salt Lake City, UT

435.276.0817